

# THE HUMAN IMAGE

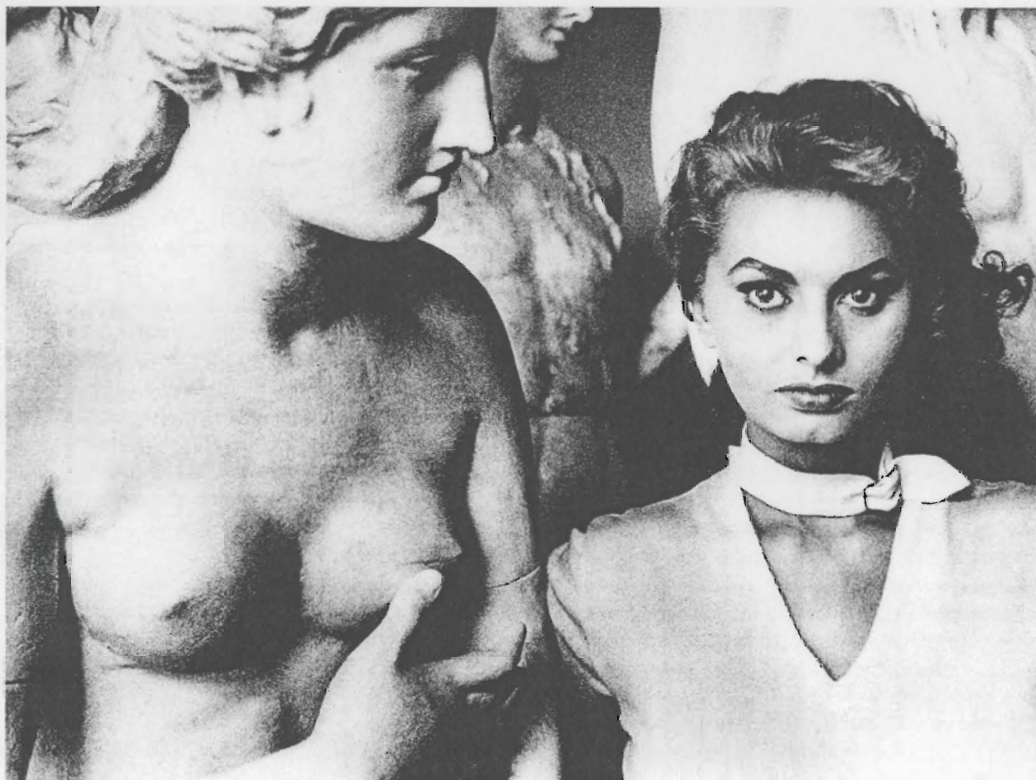
## *Portraits by George Daniell*

Wherever he found himself and his Leica in his years of constant travel – on the set of “War and Peace” with Audrey Hepburn in Rome, at John Marin’s studio at Cape Split, in D.H. Lawrence’s New Mexico – photographer George Daniell captured the faces and forms of the moment. Today, as he recovers from a stroke that partially crippled him, he devotes himself to producing one watercolor a day, a photographer’s gesture of homage toward the beauty of light.

A native of Yonkers and a graduate of Yale, Daniell started out in New York City in 1935 shooting pictures for publications like *Life*, *Time*, and *Esquire*. He became particularly well known for his portraits of artists, writers, and actresses, many of whom were also his friends. His portfolio includes memorable studies of John Marin, Georgia O’Keeffe, Beatrice Abbott, Tennessee Williams, Edith Hamilton, among others. And there has never been a more famous photo taken of Sophia Loren than the one on this page.

From early on, the North Atlantic coast had a special appeal to Daniell as well – his photo-essay on Grand Manan fishermen in the 1930s is a documentary of great power – and since the 1950s he has lived in Trenton, Maine.

His work has been shown widely in New York (at the Museum of Modern Art, for example) and Maine (recently at the Evans Gallery in Portland), and he was profiled in the November 1991 *Dawn East*. Some of his best work is also represented in the Bowdoin College Museum of Art, whose rapidly growing photography collections have proved both a popular attraction and a valuable teaching tool. George Daniell has been able to enjoy one of an artist’s greatest satisfactions: finding the work of one’s youth being rediscovered and cherished by a new generation of students and collectors.



SOPHIA LOREN,  
ROME, 1955

GEORGE DANIELL,  
GRAND MANAN,  
NEW BRUNSWICK,  
1937



BIO

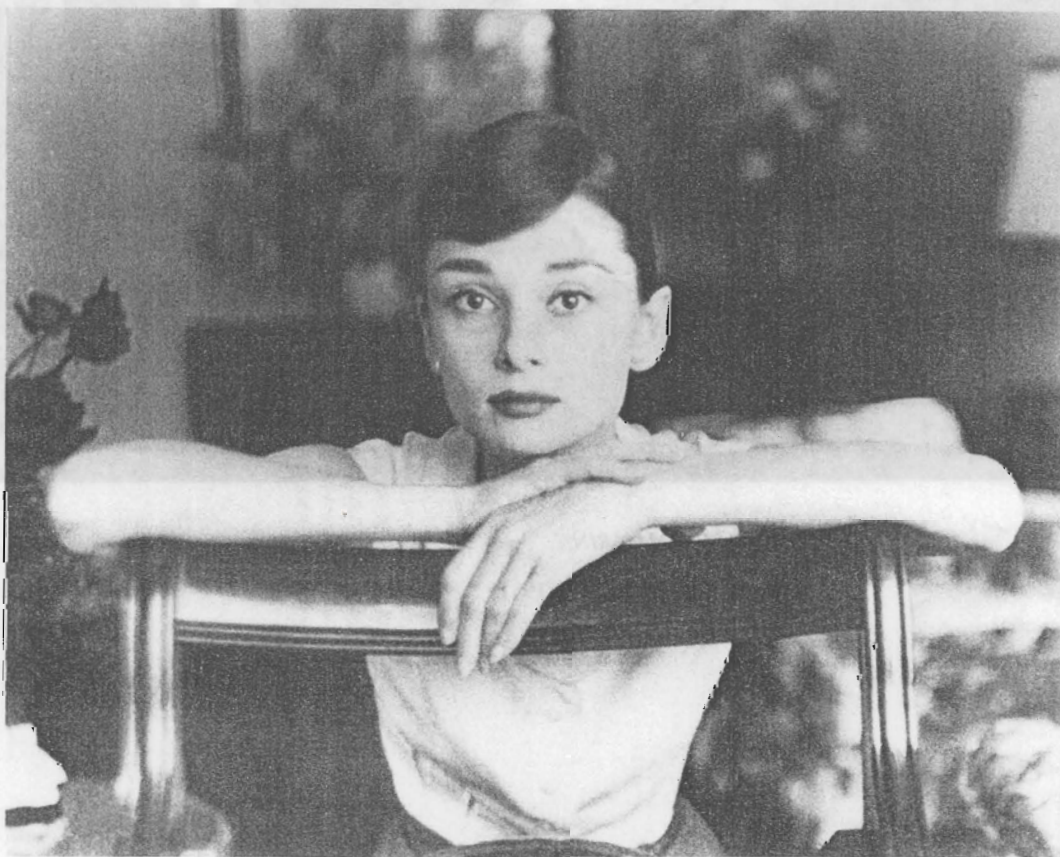




*JOHN MARIN,*  
CAPE SPLIT, MAINE, 1951



W.H. AUDEN,  
ISCHIA, 1955



AUDREY HEPBURN,  
NEW YORK CITY,  
1955



*MAN LEAVING SUBWAY.*

NEW YORK CITY.

1935

NEW YORK CITY,





*D. H. LAWRENCE'S THREE WOMEN:*

*FRIEDA LAWRENCE,*

*DOROTHY BRETT,*

*MABEL DODGE LUHAN,*

*SANTA FE, NEW MEXICO, 1952*





*GREEK SAILOR,*

1957